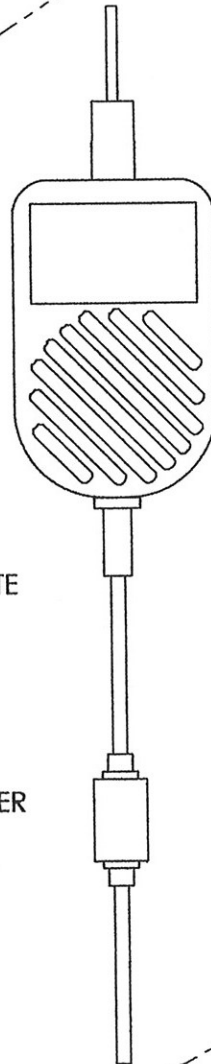
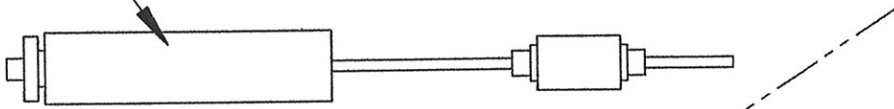


USER INSTRUCTIONS FOR THE PSV-12

PLUG INTO CIGARETTE LIGHTER



TROUBLE-SHOOTING NOTES:

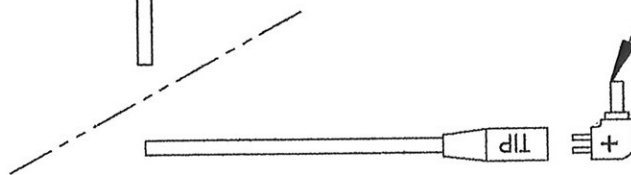
1. IF LED LIGHT DOES NOT LIGHT UP, CHECK:-


- a) IS THE PSV-12 PLUGGED INTO THE CIGARETTE PROPERLY.
- b) SOME CIGARETTE LIGHTERS IN CARS REQUIRE THAT THE KEY IS IN THE IGNITION AND SWITCHED TO ACCESSORIES. CHECK THE CAR USER MANUAL TO CONFIRM IF THIS APPLIES TO YOUR CAR.
- c) BATTERY CHARGER WORKS - PLUG MAINS POWER SUPPLY INTO THE BATTERY CHARGER AND CHECK THAT LED COMES ON.

2. IF THE RIGHT ANGLE CONNECTOR COMES APART FROM THE MAIN ASSEMBLY OF THE POWER SUPPLY, REASSEMBLE AS FOLLOWS:

- a. TO ENSURE CORRECT POLARITY ALIGN THE "+" SIGN ON THE MALE CONNECTOR WITH THE "TIP" SIGN ON THE FEMALE CONNECTOR (AS SHOWN)
- b. PUSH THE CONNECTORS TOGETHER.

PLUG THIS END INTO THE SE400 BATTERY CHARGER



	SEA DWG DESCRIPTION: USER INSTURCTIONS FOR PSV-12			DWG NO.: 100253-03	REV: A	A4
	DRN: SJC	CHKD: <i>[Signature]</i>	APPD: <i>[Signature]</i>	DATE: 25.09.02	SCALE: NTS	SHEET: 1 OF 1