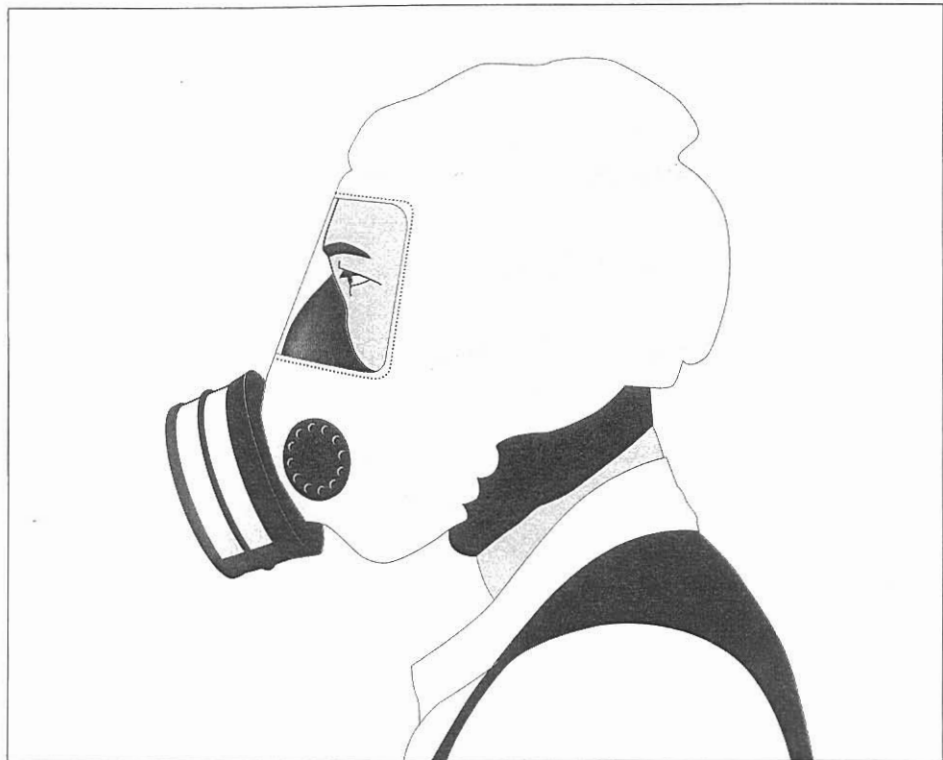


Sundström

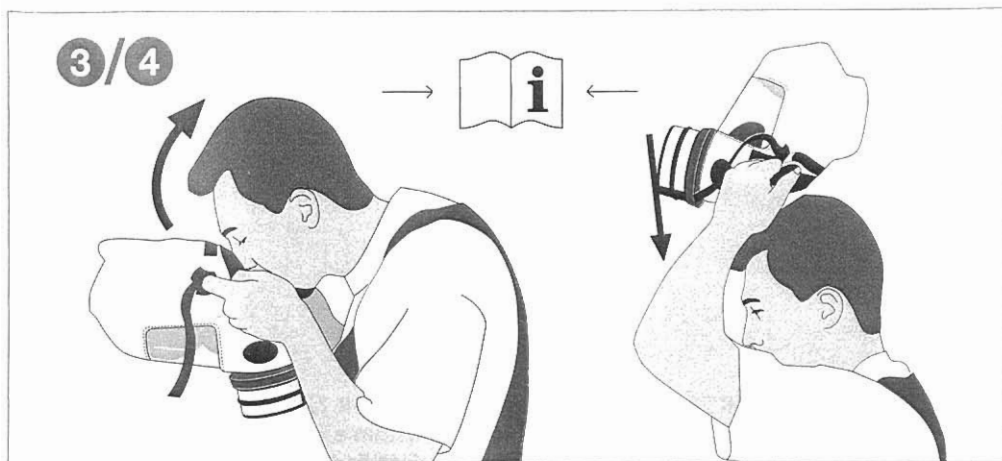
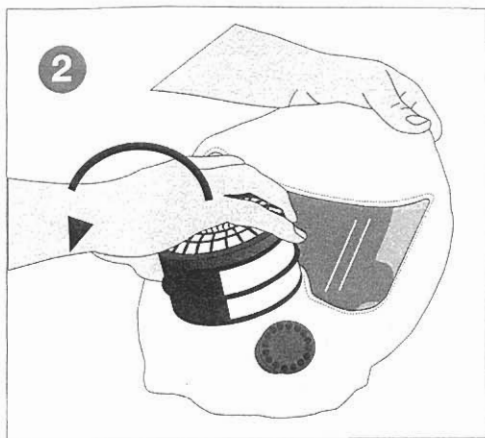
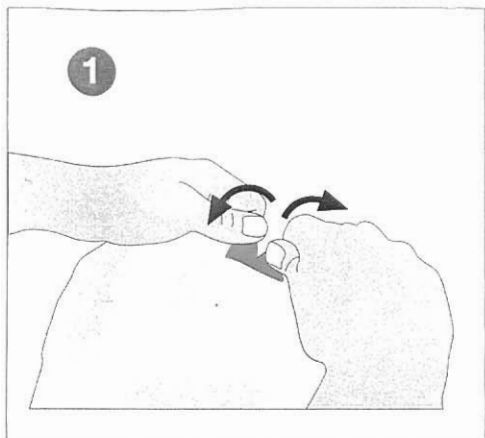


SR 76-2

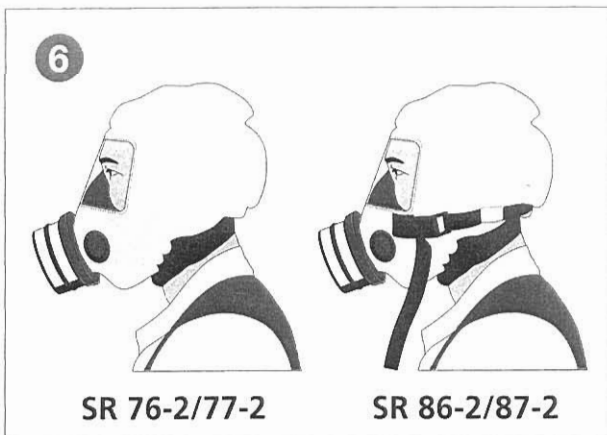
SR 77-2

SR 86-2

SR 87-2



SR 86-2/87-2



SR 76-2/77-2

SR 86-2/87-2

1. Applications

The **SR 76-2/86-2 Chem** is an escape hood designed for use as respirator during evacuation in the event of chemical emission accidents.

The **SR 77-2/87-2 Smoke** is an escape hood designed for use as respirator during evacuation in the event of a fire or chemical emission accidents.

2. Approvals

Two variants of the **SR76/86 Chem** have been tested and approved in accordance with EN 403:2004, with the exception of Clause 6.11 Filter and with AS/NZS 1716:2003, i.e. the SR 76-2/86-2 S which is intended for stationary storage, and the SR 76-2/86-2 M which is also approved as a portable escape hood. The filters of the hood have been tested and approved in accordance with EN 141:1990 (gas filter) and EN 143:2000 (particle filter). The SR 76-2/86-2 Chem is CE labelled.

Two variants of the **SR 77-2/87-2 Smoke** have been tested and approved in accordance with EN 403:2004, EN 14387:2004 and AS/NZS 1716:2003, i.e. the SR 77-2/87-2 S which is intended for stationary storage, and the SR 77-2/87-2 M which is also approved as a portable escape hood. The SR 77-2/87-2 Smoke is CE labelled.

3. Description

The escape hood is based on the Sundström SR 90 M/L half mask mounted in a flame-retardant and chemicals resistant material. The hood can be put on quickly and simply, without prior adjustment. The hood is available in one size that will fit most adults and teenagers. The hood is vacuum-packed in an aluminium bag. Moreover, variant M is supplied in a handy nylon emergency case which can be secured to the user's belt, for example.

SR 76-2/86-2 • The hood is equipped as standard with the ABEK1-Hg-P3 combination filter, and provides protection against the toxic gases and particles that may be emitted in accidents involving chemicals. The hood can be supplied with other filters from the standard Sundström range. The actual configuration is shown on the packaging label.

Type A1 provides protection against organic gases and vapours, such as solvents, the boiling points of which are higher than +65 °C.

Type B1 provides protection against inorganic gases and vapours, such as chlorine, hydrogen sulphide and prussic acid.

Type E1 provides protection against acid gases and vapours, such as sulphur dioxide and hydrogen fluoride.

Type K1 provides protection against ammonia and certain amines, such as ethylene diamine.

Type Hg provides protection against mercury vapour.

Type P3 provides protection against all types of particles, both solid and liquid.

SR 77-2/87-2 • The hood is equipped with the ABEK1-CO gas filter and the class P3 particle filter, and provides protection against carbon monoxide and other toxic gases, and against particles that may be emitted in a fire or in chemical emission accidents.

4. Warnings

- The hood provides protection only if the surrounding air has a normal oxygen content, 17–21 %.
- The hood must not be used by children or by persons with deep facial furrows, beard growth, or unusual face size.
- The hood is designed only as an escape hood for single use. Maximum use time 30 minutes.
- The hood will not provide protection if the packaging has been damaged so that the vacuum has been lost.
- Be aware that flames or liquid metal droplets may ignite the charcoal in the filter, which may result in acute levels of toxic substances.
- Donning procedure shall be carried out in accordance with this manual.
- Storage under conditions other than those specified in this manual may affect the shelf life.
- The Chem SR 76-2 and SR 86-2 escape hoods do not provide protection against carbon monoxide, CO.

5. To put the hood on

- Tear the aluminium bag open at the red tear marking. **Fig. 1.**
- Prepare the hood for putting it on. **Fig. 2.**
- Put the hood on by placing the neck strap under your chin and pulling the hood back over your head. **Fig. 3.**
- The hood can also be put on by pulling it over your head from above. **Fig. 4.** Persons who have long hair or wear glasses should proceed as shown in Fig. 3.
- On the SR 86-2/87-2, then adjust the rubber straps so that the mask fits firmly and comfortably. **Fig. 5.**
- The hood in place. **Fig. 6.** If necessary, adjust the hood so that the mask seals against your face.

6. Maintenance/Service

Check at least every three months that the packaging has not been damaged so that vacuum has been lost. Also keep track of the date for service/filter change. The latest date for this is specified on the packaging. Service may be carried out only by the manufacturer or a service partner approved by the manufacturer.

The following conditions apply to service/filter change:

- The date for service specified on the packaging must not have passed.
- The aluminium bag must not have been opened.
- Before service, get in touch with the manufacturer for information concerning the applicable procedures and the right delivery address.

7. Label symbols



See user instructions



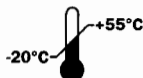
Production date



Latest date for service/
filter change:



Max. ambient relative humidity
during operation and storage



Temperature range during
operation and storage