



training



Sundström 
FILTERS



HOW TO...

 **HOW TO...****Fit a filter**

Check that you are using the correct filter or filter combination.



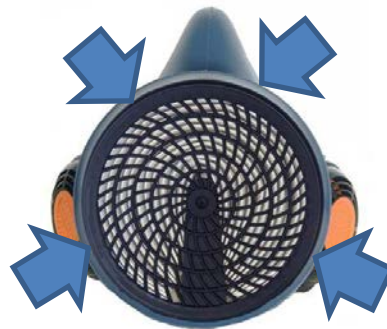
Make sure the arrows on the filter are pointing towards the respirator.



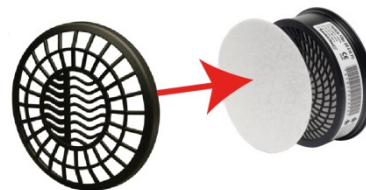
Place the filter into the filter attachment of the respirator. Stretch the rubber lip of the filter attachment and nudge the filter into it until the flange of the filter is firmly seated in the inside groove of the filter attachment.



Ensure that the flange of the filter fits into the groove inside the rubber fitting.



Squeeze the prefilter holder onto the main filter until it snaps into place.

**IMPORTANT:**

Always use a prefilter, regardless of whether you are using a gas filter, particle filter or combination filter.

 **HOW TO...****Fit a prefilter**

Place a new prefilter into the prefilter holder.



Snap the prefilter holder onto the front of the main filter.

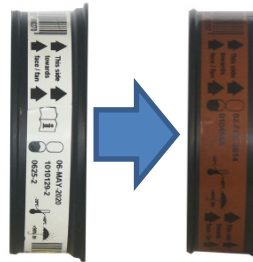


HOW TO...

Make a combination filter

A particle filter can be attached to the front of a gas filter. Other combinations are impossible.

Place the particle filter onto the front of the gas filter, arrows pointing in the same direction. With both hands, squeeze the two filters together until they snap onto each other.



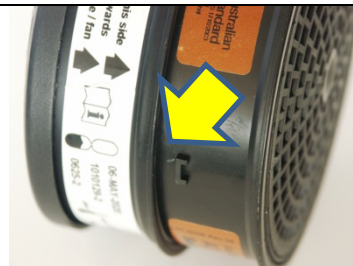
Place a new prefilter in the prefilter holder and snap it on to the front of the particle filter.



HOW TO...

Separate a combined filter

Insert a coin in the space between the flange of the particle filter and the small lug on the side of the gas filter.



Push coin firmly and twist until the two filters pop apart.



HOW TO...

Remove a filter from the respirator

Pull the rubber tab at the bottom of the filter attachment and peel back the rubber rim until the filter is free.



Watch this on **YouTube**
(using your SmartPhone, tablet or computer)



http://youtu.be/gym8O_lsxbg