



**training**



**Sundström**   
**SR100**  
Half face respirator

*used with*  
**FILTERS**





**SR100**  
Half face respirator

### Companion module:

---

SR100 used with FILTERS — **HOW TO...**

---

### Related material:

---

SR100 used with SUPPLIED AIR

---

SR100 used with SmallTalk voice communication

---

About Sundström PARTICLE FILTERS

---

About Sundström GAS FILTERS

---

SR200 FULL FACE MASK

---

## About your SR100 half face respirator:

### What is it?

The SR100 is a respirator that covers your nose and mouth, providing breathing protection by filtering out harmful substances from the outside air before it enters your lungs.

A half face respirator does not provide protection for your eyes or face.



### How does it work?

The half mask body is made of a soft silicone material.

It has a fitting for attaching filters, an inhalation valve, two exhalation valves, and a head harness for holding the respirator securely against your face.

When you breathe in, the air comes into the mask through the filter. When you breathe out, the air goes out through the exhalation valves. If your mask is properly fitted, no unfiltered outside air leaks into the mask as you breathe.



### Why silicone?

Silicone masks are made for daily work or long-term wear, that is, in work places where you use the respirator for most of the time. They are comfortable, and very soft against your face. In addition, a silicone respirator is largely non-allergenic and minimises perspiration along the sealing rim.



### Does size matter?

A silicone mask is so soft and pliable that it will fit almost anybody. But people's faces vary in many ways, not only in size but also in the shape of the cheekbones, nose and chin.

The SR100 comes in three sizes, Small/Medium, Medium/Large and Large/Extra Large. One of them will fit your face better than the other and feel more comfortable and stable on your face.

The mask size may also influence the wear of other safety equipment, such as spectacles, goggles, ear muffs and face shields or visors. Make sure you try on your mask together with other protective equipment you normally wear.

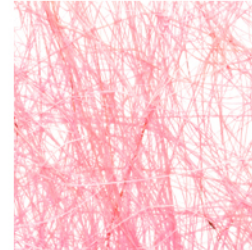


---

### Where can the SR100 be used?

Your SR100 half face respirator can be fitted with particle (dust) filters, gas filters, or combined dust and gas filters. Provided you are using the correct filter or filters, your half mask can be used for:

- Nuisance dust and aerosols
- Harmful dust and aerosols
- Gas and vapour
- Viruses and bacteria
- Mould and fibre



---

**IMPORTANT:** filter choice depends on the type of hazard.

- Particle filters do **NOT** protect against gas and vapour.
- Gas filters do **NOT** protect against particles.
- Certain gas filters protect **ONLY** against certain gases and vapours.

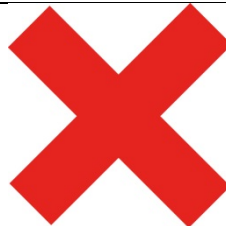


---

### Where should you **NOT** use the SR100?

There are a few situations where your half face respirator with filters should not be used. In many of these situations, filter protection is inadequate, and you will need an external air supply:

- In oxygen-deficient areas (that is, there is not enough oxygen in the air for human breathing).
- If the contaminant is unknown.
- Where there is a risk of eye irritation or eye damage.
- Where the atmosphere is Immediately Dangerous to Life and Health (IDLH).
- Where the concentration of the hazard is too great to use a half mask or filter protection according to your local laws and regulations.
- If you have a beard, moustache, sideburns, whiskers, stubble, severe acne or other skin conditions that could interfere with the face seal.
- If you have asthma or other respiratory problems.



---

### **One mask — one user**

Your mask is a personal item. Do not share masks with others, and always store your own respirator in a place where it can't be mixed up with other masks.

The best way to keep track of your own mask is to use masks fitted with an ID tag. The tag makes sure that your mask won't be mistaken for someone else's.

The SR100 is fitted with a slot where you can fasten a barcode or ID tag.



---

### **Before fitting the respirator:**

- Make sure your face is clean shaven and washed.
- Check the mask for cracks and other defects.
- Ensure that the mask is clean and dry.
- Check that the filter/cartridge is properly fitted.
- Make sure that you are using the correct filter/cartridge.
- Perform a leakage test.



---

### **Tell your supervisor IMMEDIATELY if...**

- you experience any problems breathing through your respirator.
- you have troubles wearing the respirator together with other safety gear (hardhat, goggles, ear muffs etc.)
- you notice any damage to the mask.
- the leakage test doesn't work.
- you are unsure of use or maintenance of the respirator.



---

Watch this on **YouTube**  
(using your SmartPhone, tablet or computer)



<http://youtu.be/m1MBzt55x3w>

---