



training



Sundström 

SR100

Half face respirator

used with

FILTERS



HOW TO...



HOW TO...

Fit the SR100

Sling the lower neck strap around your neck.



Hold the mask up to your chin.



Cup the mask up, until it covers your mouth and nose.



Hold the mask in position, pull the upper head harness up and over your head. Make sure the upper strap sits on the crest of your head.



Even out the tension of the head harness by hooking your fingers around the LOWER strap and pulling outwards a few times. This will increase the lift of the upper strap, supporting the weight of the filter.



IMPORTANT:

Never pull the head harness over a hard hat, ear muffs, goggles, cap or other head gear – the harness must be fitted **DIRECTLY** on your head.



Watch this on 
(using your SmartPhone, tablet or computer)



http://youtu.be/_SGHoBfrCPY



HOW TO...

Fit a filter

Make sure the filter is turned the correct way (arrow pointing towards the respirator).



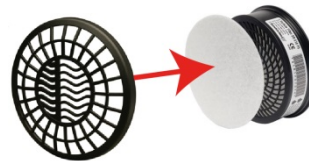
Place the filter inside the rubber fitting ring of the mask.



Ensure that the flange of the filter fits into the groove inside the rubber fitting.



Fit a prefilter to the front of the main filter



HOW TO...

Fit a prefilter

IMPORTANT:

A prefilter should ALWAYS be attached to the front of any main filter, whether a particle or a gas filter.



Place a prefilter in the prefilter holder.



Snap the prefilter holder onto the front of the main filter.



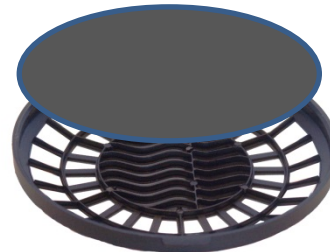


HOW TO...

Check for leakage

Unsnap the prefilter holder from the front of the main filter. Remove the prefilter from inside the prefilter holder.

Fit a leakage testing disc into the prefilter holder and snap it onto the front of the main filter.



Fit the respirator on your face.

Breathe in and hold your breath.

The mask should collapse against your face and stay in that position until you breathe out again.



If the mask returns quickly to its normal shape, there may be a leakage problem. If so, repeat the leakage test. If the same problem happens again, see your supervisor.



HOW TO...

Remove a filter

Pull the rubber tab at the bottom of the filter flange and peel back the rubber rim until the filter is free.



HOW TO...

Give the mask a QUICK CLEAN

IMPORTANT:

Only a CLEAN respirator can provide effective protection. The mask should be cleaned and checked after each use — a simple procedure that takes only a minute.

Cleaning may be done with warm soapy water and a soft cloth, or by using Sundstrom's special sterilised hygienic cleaning tissues that keep your mask soft and flexible.

NEVER use solvents or abrasives.



Clean the outside of the respirator, checking for cracks and other damage.

Wipe the inside of the mask, including any 'nooks and crannies' inside the respirator.



Make sure the face rim and chin cup of the mask are thoroughly clean.



Replace the prefilter with a new one.

**HOW TO...****Perform a THOROUGH CLEAN**

Give the respirator a quick clean, as described above.

Remove the filter and wipe the inside of the filter attachment. Pay special attention to the groove in the filter rim when cleaning.

Remove the protective caps from the exhaust valves. Pull out the membranes and wipe clean. Wipe the valve seats before refitting the valves and replacing the protective caps.

It is of critical importance that both membranes and seats are clean and intact. No dirt or grime must remain, and the parts must not have any cracks, tears or other damage.



Pull out the inhalation membrane from inside the mask. Clean the membrane and the valve seat. Replace.

Make sure ALL valves are properly fitted. Put the respirator to your face and draw a few deep breaths to make sure that the valves are in good working order.



If very dirty, detach the headstrap, clean and dry separately before re-attaching.



Watch this on **YouTube**
(using your SmartPhone, tablet or computer)



<http://youtu.be/RZkYTWTAM1I>
