



**training**



**Sundström**   
**SR200**  
Full face respirator

*used with*  
**FILTERS**



**HOW TO...**

---

 **HOW TO...****Fit the SR200**

---

Check that you are using the correct filter or filter combination.  
Check that the filter is securely fitted in the filter attachment of the mask.  
Check that the respirator is clean, complete, and correctly assembled.



---

Loosen the side straps of the head harness. This is best done by twisting the strap holders forward while pulling backwards on the strap.



---

Move the head harness up over the mask and away from your face.



---

Place your chin in the chin cup and pull the head harness over your head.



---

Tighten the side straps in pairs by pulling the loose ends backwards.



---

Adjust the straps until the respirator fits firmly but comfortably on your face.

Loose strap ends can be hooked to the head harness.



---

If necessary, adjust the two top straps. This is done by undoing the buckles, pulling the straps, and fastening the buckles. If this seems difficult to do with the mask fitted, take the mask off, adjust, and don the mask again.



---

Watch this on **YouTube**  
(using your SmartPhone, tablet or computer)



<http://youtu.be/9sj6Y1bFmpo>



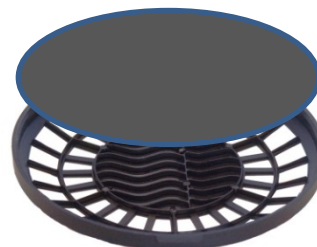
## HOW TO...

### Check for leakage

---

Unsnap the prefilter holder from the front of the main filter. Remove the prefilter from inside the prefilter holder.

Fit a leakage testing disc into the prefilter holder and snap it onto the front of the main filter.



---

Fit the respirator on your face.

Breathe in and hold your breath.

---

---

The mask should collapse against your face and stay in that position until you breathe out again.



---

If the mask returns quickly to its normal shape, there may be a leakage problem. If so, repeat the leakage test. If the same problem happens again, see your supervisor.



## HOW TO...

### Take off the mask

---

Loosen the side straps by twisting the strap holders forward.



---

Pull the head harness up and over your head.



## HOW TO...

### Fit a filter to the respirator

---

Make sure the threaded filter adapter is firmly screwed in to the air inlet of the mask.



---

Make sure the filter is turned the correct way (arrow pointing towards the respirator).



---

Place the filter inside the rubber attachment.

---

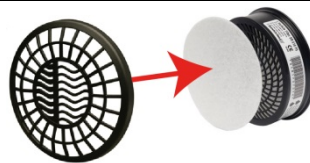
---

Ensure that the flange of the filter fits into the groove of the attachment all the way around.



---

Fit a prefilter to the front of the main filter.



## HOW TO...

### Fit a prefilter

---

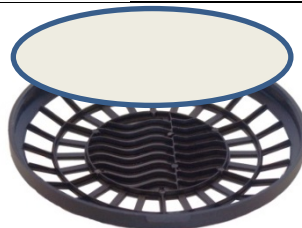
#### IMPORTANT:

A prefilter should ALWAYS be attached to the front of any main filter, whether a particle or a gas filter.



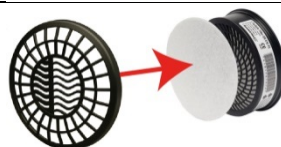
---

Place a new prefilter in the prefilter holder.



---

Snap the prefilter holder onto the front of the main filter.



## HOW TO...

### Give the mask a QUICK CLEAN

---

#### IMPORTANT:

Only a CLEAN respirator can provide effective protection. The mask should be cleaned and checked after each use — a simple procedure that takes only a minute.

Cleaning may be done with warm soapy water and a soft cloth, or by using Sundstrom's special sterilised hygienic cleaning tissues that keep your mask soft and flexible.

NEVER use solvents or abrasives.



---

Clean the outside of the respirator and visor, checking for cracks and other damage.



---

If the head harness is soiled, a toothbrush can be used to remove light dirt.

---

Wipe the inside of the mask and visor, including any 'nooks and crannies' inside the respirator.



---

Make sure the face rim of the outer mask, as well as the face rim and chin cup of the inner mask are thoroughly clean.

---

Replace the prefilter with a new one.



## HOW TO...

### Perform a THOROUGH CLEAN

---

Give the respirator a quick clean, as described above.

---

Unscrew the filter adapter and detach the filter from it.



---

Pull off the two exhalation valve covers and lift out the membranes (valves).



---

From inside the mask, remove the three inhalation membranes (one in the air inlet, two on the sides of the inner mask).



---

Carefully wipe clean all membranes and valve seats. It is of critical importance that both membranes and seats are clean and intact. No dirt or grime must remain, and the parts must not have any cracks, tears or other damage.



---

If very dirty, detach the head harness, clean and dry separately before re-attaching.



---

Inspect all parts, then reassemble the respirator when dry.

---

Watch this on   
*(using your SmartPhone, tablet or computer)*



<http://youtu.be/O2fvD9iadoc>

---